

HOMEWORK EXPECTATIONS

EYFS - YEAR 6



CUMWHINTON
SCHOOL

All pupils from Year 1 to Year 6 will have reading and spelling homework. There will be separate homework expectations between Key Stage 1 and Key Stage 2 and these are detailed in the relevant sections.

All pupils will:



- Have a school reading book (reading stage) and this will be brought home so they can be heard reading (by an adult - daily if possible)
- Weekly spelling (RWI/high frequency & common exception words) - include handwriting as part of spellings (handwriting paper sent with spellings in homework book)



EYFS & Key Stage 1 (Years 1 & 2)

- Children will be set graphemes to learn (Phonics) - RWI video sent on SEESAW



Times tables practice

- Parents to be updated on the time tables the children are learning in class so they can continue the practicing at home.



Children in Year 2 to Year 6 need to consistently access Time Tables Rockstars as part of their ongoing home learning



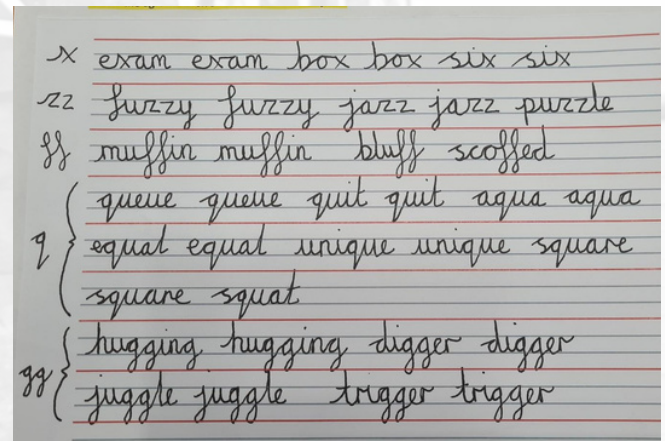
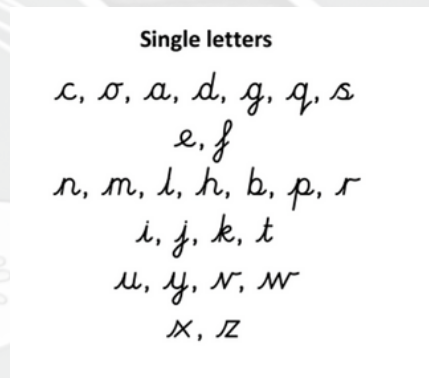
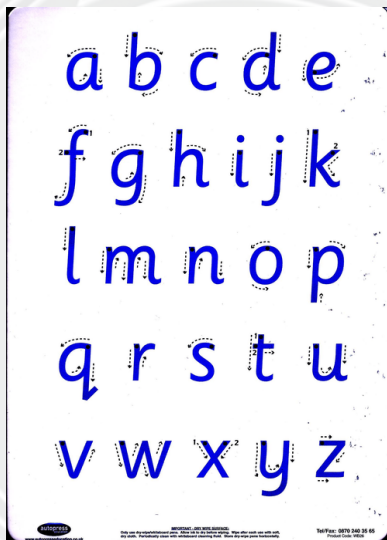
Key Stage 2 (Years 3,4,5 & 6)

- 1 piece of homework linked to the work being completed in class (*retrieval practice - from last term, last week or the week of the homework set*) - homework should take **no longer than 30 minutes to complete**.
- Spellings handwriting - please include weekly spellings into a sentence (forms part of the homework).

Homework to be set on a **Tuesday** and returned for the following **Monday**.

HANDWRITING IS A BASIC SKILL THAT INFLUENCES THE QUALITY OF WORK THROUGHOUT THE CURRICULUM. AT THE END OF KEY STAGE 2 ALL PUPILS SHOULD HAVE THE ABILITY TO PRODUCE FLUENT, LEGIBLE AND, EVENTUALLY, SPEEDY JOINED-UP HANDWRITING, AND TO UNDERSTAND THE DIFFERENT FORMS OF HANDWRITING USED FOR DIFFERENT PURPOSES.

WE AIM TO MAKE HANDWRITING AN AUTOMATIC PROCESS THAT DOES NOT INTERFERE WITH CREATIVE AND MENTAL THINKING.



Example of how the homework will be presented in homework books.

